

We care for milk
We care for life



SYLCO
H E L L A S
K. SYLEOS S.A.

A D V A N C E D A N I M A L F A R M S O L U T I O N S



FAST EXIT

The best cost / Performance ratio

Milking parlors of this type have increased performance, yet they require minimum personnel. They are ideal for farms, sized between 200 and 1200 sheep or goats.

The parlor size starts from 12 and reaches up to 80 positions in a single or double row. Their capacity starts at 200 and goes up to

550 animals per hour, while for proper operation 1 to 3 people are required. The initial installation cost is very low and the need for maintenance is minimal.

Top quality construction

The steel construction is a very sturdy, hot galvanized, with no plastic parts in order to withstand the tough conditions inside a farm. There is a full stainless steel model, where all





steel construction is made of stainless steel. The space for each animal is increased to 40 cm, so that even large animals are comfortable.

The feed troughs are stainless steel and have partitions for each animal. The whole front side is lifted by two special air cylinders, one on each side.

The entrance gates for the animals are also air operated. There is a central control box

inside the milking pit, where all the controls for fast exit and entry doors are fitted. The milker can control entry and exit of the animals without leaving the pit.

The operation can also be done via remote control. In this case the operator carries the remote control and has absolute freedom of movement.

A stainless steel protection for pipes and milking sets is always fitted.





Distribution of feed is easy and accurate

The feed dispensing system provides feed to the animals easily, fast, accurately and trouble free. It is made of stainless steel.

The dispensing of feed is done by a special screw conveyor. It can dispense a large variety of feedstuff without a problem. The lack of plastic parts and the use of a gear motor make sure the system works long-term without problems. It can be adjusted to





provide the exact amount of feed with a single press of the button.
The setting is easy and the operator is not obligated to grant a multiple of a certain amount of feed then pressing the button, as with the other systems on the market.

Key advantages

- Increased performance
- More space for the animals
- Immediate exit of the animals
- Animals can exit on any of the 3 sides.





ROTARY MILKING PARLORS

High yields – Few People

Rotary Milking Parlors have extremely high yields. They are ideal for farms with more than 1000 animals. The parlor size starts from 18 and goes up to 60 places and their performance is up to 800 animals per hour. It only requires 2 to 3 people to operated.

The required building space is also minimal

The operator has complete control of the system. The control panel, which is mounted next to the milker includes displays and controls for all parlor functions.

The operator can, for example, to start, stop, or even to change the direction of rotation.

There is built-in meter, to count the total number of animals already milked.

The rotational speed is easily regulated, while it rotates, so when a different the production group enters the parlor the speed can change, achieving always the maximum performance of the parlor.

The robust construction ensures long-term operation with minimal maintenance



Sturdy Construction

All parts of the trap are designed, manufactured and tested with the outmost of care. The metal parts of the trap are all hot dip galvanized. The rotating mechanism is the fifth generation and utilizes industrial chain type. The rotation is smooth under any circumstances.

The central swivel allows the continuous flow of vacuum and power to the parlor and the transfer of milk to the cooling tank while the stall rotates. All milk, washing even vacuum pipes are stainless steel. Also all connections and bends are stainless steel.

Advanced Feed Dispensing System

The feed dispensing system is another innovation. It has the ability to provide automatically and with high accuracy 2 different kinds of feedstuff. The adjustment of each feed type is independent.

The system can dispense any type of feed.

At the end of the cycle the trough is emptied any feed remnants.

Safe During Operation

Safety is extremely important. There are emergency buttons, to immediately stop rotation. There are sensors protecting the animals as well.



SYLCO MOBILE

Fast Deployment

It takes only a few minutes to secure and deploy SYLCO MOBILE.

You only have to park it to a leveled field, lower the stabilizing support legs, adjust them so that the Sylco MOBILE is set to the correct working angle, plug in the power, open the doors and you are done!!!

Mobile

SYLCO MOBILE is a towable milking solution. The stainless steel frame is designed for durability in harsh environments. 3 axles with brake system makes it easy to handle on the road.

Extra care was taken during designing so that the weight is equally balanced to increase safety on the road.





Easy to use

Milking is easy fast and safe for the animals. The durable stainless steel fast exit frame provides a calm environment for the animals to be milked while eating their daily ration of feed. All pipes (milk, cleaning, air) are from stainless steel. Milking sets incorporate automatic valves and electronic pulsators.

Receiving unit and milk pump is again from stainless steel.

Cleaning is done automatically by the electronic control unit. Sylco mobile is an innovative product solution that provides fresh high hygiene milk on site. It is possible to follow the flock and be deployed fast and easy.

It combines a state of the art milking parlor with a small pasteurizing and storing facility.

The milking is done by means of 1x12, 1x16, 1x24, 1x32 stainless steel fast exit parlor.



RECEIVING UNIT



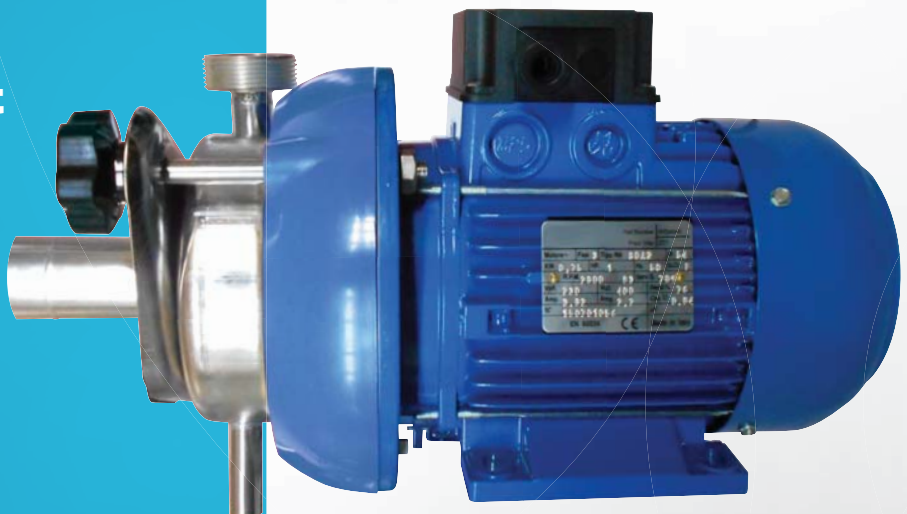
High Level of Hygiene – Problem free operation

Stainless steel 60 liter receiving unit collector, drastically reduces the possibility of malfunctions of the parlor, while **1 HP** stainless steel milk pump transfers the milk fast and helps in effective cleaning the installation thanks to its' high capacity (14,000 liters / hour).

The use of stainless steel pipes, for milk, washing and vacuum line as well as stainless fittings and bends raise hygiene at the highest level possible.

The large diameter of the pipes used, normalize and enhance the stability of vacuum level.

There are different available options for the inlet and outlet of the milk pump.





MILK METERS

The elevation of animal production is the goal and in order to do so milk measuring and farm management is a necessity.

SYLCO Milk Meter

Sylco milk meter offers the chance to smaller farms to start animal yield recording, with a very low cost. All the milk the animal produces is collected and after milking the total quantity is measured.

The milk meter can hold up to 3 liters of milk. Since all the quantity is collected it is very accurate. The meter is cleaned in place during the normal cleaning of the milking parlor.

There is also a possibility to get sample of the milk for analysis. It can be installed to most of the parlors.

Data can be collected via i-farm mobile devices and introduced to a simplified version of the i-farm SG software.



WAIKATO Milk Meter

The WAIKATO analogue milk meter is suitable for measuring goat yields.

It collects part of the milk passing through it and can measure yields of up to 4.5 pounds per animal.

SYLCO i-FARM SG

SYLCO i-Farm SG is a farm management solution that fully covers the needs of an animal farm regardless the size.

It provides total control over the farm, as well as the necessary information to the manager to make the right choices for its development. Milk recording, milk yield data analysis, data comparisons, genealogy reports, vaccinations and alerts handling are done easily and fast.

The application has been developed utilizing the experience and knowledge of SYLCO and is tailored to the requirements of a modern farm. Synchronization with portable data loggers is easy, safe and fast.

Data collection in a farm is not done at the office!

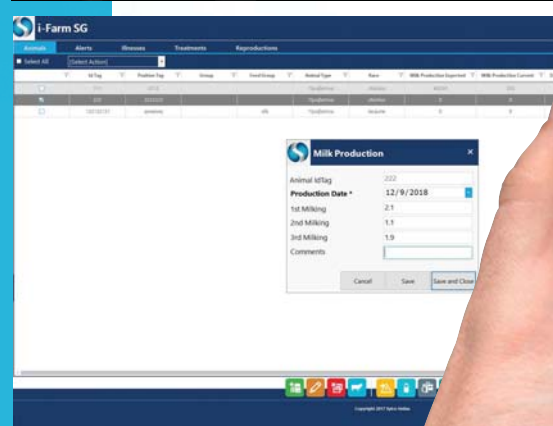
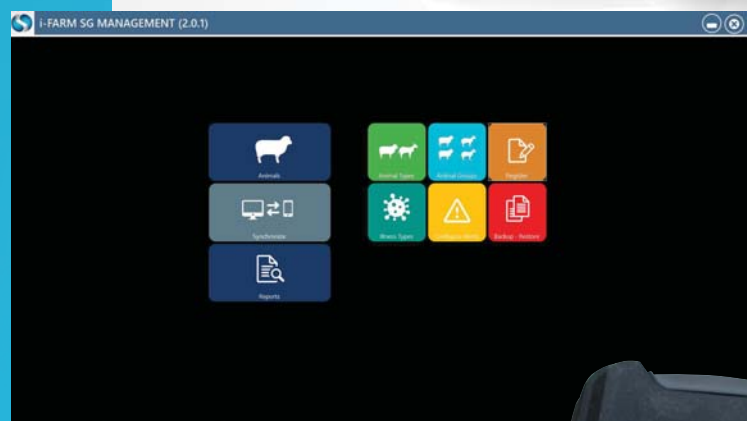
SYLCO i-FARM Mobile

The portable data collection application is a functional application that allows on-site collection of data.

In conjunction with the portable identification device, data collection becomes simple and fast.

The device reads the electronic ear tags and registration of milk production or any other work is instant. The operator with few keystrokes records new animals, data, and alerts.

The user can also retrieve animal data, alerts or attention remarks that have been registered or add new ones.





Sylco i-Meter II

Sylco iMeter II is an electronic milk meter specifically designed for goat and sheep milk measurement. It is robust and easy to clean. The electronics are well protected in a separate compartment. In the body of the milk meter an electronic pulsator has been integrated offering more functionality and enhancing the quality of milking.

The control box has a bright easy-to-read 4 digits screen for all the basic information the operator wants to see from a distance. A second LCD screen offers access to much more animal data when needed and the possibility to alter settings.

The compact design makes it ideal for installation in goat and sheep milking parlors where space is limited.



i-Meter II is an innovative solution "all-in-one". The meter is designed to serve the increased needs of accurate measuring for sheep and goats.

In the milk meter body, all electronics are placed in a separate compartment beneath the milk chamber. It does not require complicated wiring. It has no sensitive parts.

The body of the milk meter needs only to be connected to the next and sync with the corresponding control unit. The meter has an electronic pulsator integrated. Settings are change very easy of through the control panel.

It can be set for simultaneous or alternating milking (one or two channels - right / left).



MILKING SET



The new SYLCO HELLAS milking set for sheep and goats was developed based on our long experience in goats and sheep mechanical milking.

It combines the ease of use and cleaning with a speed increase by 25% and sets new high standards of animal hygiene.

Oval Liner with Reinforcements

The silicone liner for sheep with innovative design (oval with reinforcements) accelerates milking and effectively relieves the udder. It's flat shape minimizes closing time of the liner, allowing it to close tightly, without squishing the nipple.

Vertical stripes allow it to open faster for the milking phase. There is minimal in between time.

The nipple is relieved of the vacuum, while the use of silicone helps eliminate irritation.



Transparent Claw Easy to Clean

SHS 1002 is the new sheep and goats claw designed for easy use and superior levels of hygiene. Its high capacity (**140ml**) does not permit milk to return to the udder, no matter how quickly and the animals release the milk.

It can be completely dismantled without the use of any tool.

The interior is completely free of any corners or points where milk or other foreign materials could be piled and cause problems in cleaning.



Milking Valve SHS 1003

Fully Automatic and Functional

The **SHS 1003** milking valve is simple and yet functional. It is fully automatic during both milking and washing.

Simple in design and maintenance, it is easily cleaned. There are neither selectors nor levers.

The milk quality is excellent because, due to the internal sphere, milk is smoothly guided to the outlet.

The milk flow is much higher. Field tests have shown an increase of speed by 20% during milking compared with other valves.

It only consists of 4 parts. Made with the outmost of care, using the highest quality materials to provide long life, **SHS 1003** is to revolutionize goats and sheep mechanical milking.

VACUUM PUMPS

The new **SYLCO ECO line** vacuum pumps deliver the stability and durability needed for professional milking with respect to the environment.

The **SYLCO ECO line vacuum pumps** are the result of extended research and testing. Our RnD applied innovated solutions in order to have maximum efficiency with minimum environment costs.

The new principles we applied in designing and high precision machining resulted in 30% lower power consumption, with less noise produced.

They are designed to work at very low speeds if needed without rising temperature.

This is extremely important when working with a VCU.

**Environment
Friendly!**



KNS 250D

The new **KNS 250D** is the entry level vacuum pump. It is a dry vane type pump coupled with a **1 HP** electric motor. It is redesigned to be more efficient with less noise. It delivers the necessary vacuum with no needed maintenance.

It is ideal for small milking machines especially moving Karts.





SVP 1200

The **SVP 1200** is an oil lubricated high efficiency vacuum pump. It is part of the new generation **ECO line pumps**.

It is designed to work on small milking installations either with buckets or with milk transfer line.

The group can be purchased with a smaller motor to cover the needs of the farm and upgraded later with a bigger to get the full potential of the pump when really needed.

It delivers its full power when used together with **3HP** electric motor.

Vacuum pump life is extended.

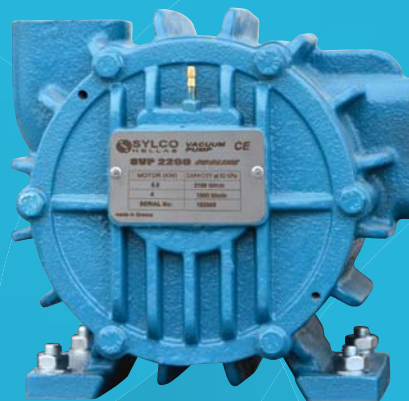
Vacuum Pump Control Unit

The **ECO line VCU** can take control of one or multiple vacuum units.



It can start and stop them as needed or at a designated pattern.

It interacts with the **ESR** (Electronic Servo Regulator) in a unique way to keep vacuum level more stable than ever and power consumption to the minimum.



SVP 2200

The **SVP 2200** is an oil lubricated high efficiency vacuum pump. It is also part of the new generation **ECO line pumps**. It is designed to work on medium and large milking installations with milk transfer lines.

It delivers its full power when used together with **7,5HP** electric motor.

ELECTRONIC PULSATORS

One of the most important parts in a parlor is the pulsation system.

SYLCO electronic pulsators and the Central Control Unit that controls them, are top choices for milking parlors.

The Central Control Unit, offers 16 different settings, like choosing different rate for milking the front and rear teats.

All pulsators follow the same constant and unchanging rhythm of milking. Milking speed increases, irritation is reduced.

The pulsators have only a few moving parts and require minimal regular maintenance.



**They operate
without problems
even at temperatures
well below zero!**



WASHING UNITS/ CLEANING

Easy, Fast & Proper Cleaning

There are 3 different electronic washing unit. Washing time and stages can be easily programmed by the user. The user can choose from the stored ready procedures or to create his own.

With the press of a button the cleaning process starts. In conjunction with the washing unit, the loop system we apply to all our installations, helps achieve perfect cleaning of the milk line.

3 different electronic washing unit



SPARE PARTS CONSUMABLES CLEANING / FILTERS

Regardless of the initial installation for proper functioning it is essential to use quality spare parts and consumables.

There is a full range of spare parts and consumables to support milking machines.

For certain parts (liners, tubes, filters) it is possible to support milking equipment that was not sold by us with adaptables the share the same high quality as our genuine line.

More than 30 different types of liners, hoses of various diameters and milk filters of all sizes are always ready to be delivered.





CLEANING LIQUIDS

SYLCO cleaning liquids have the difficult task of cleaning the milking parlor effectively, without damaging rubber parts, while respecting the environment at the same time.

We provide unique solutions to each farm. Our qualified technician will consider your needs and suggest the right product and the dosage required.

VACUUM PUMP OIL

The new SYLCO vacuum pump oil's special formula protects the pump and extends the lifespan of the pump.

The high quality standards and the special additives for vacuum pumps, help the pump to operate in extreme conditions of cold or high temperature unaffected by dust and dirt and with respect to the environment.

SOLUTIONS FOR SMALL FARMS

KNS 300M

No matter how small a farm is, the need to milk exists. **SYLCO HELLAS** cares for these farms as well. We provide portable machines for 1 or 2 animals or conventional machines with buckets.

KNS 300M is a portable solution that does not compromise on the quality of milking. It can milk 1 or 2 animals. The high capacity vacuum pump (300 liters) offers instantly the necessary vacuum level for proper milking animal.

It is the only portable milking machine that incorporates electronic pulsator, bringing to small farms, quality milking that one can find in large parlors.

The high-speed vacuum regulator stabilizes vacuum level within milliseconds.



A large vacuum tank lid provides easy access to the interior for cleaning.



KNS 300D

- Vacuum pump capacity is 280 liters / minute.
- Motor power 1 HP.
- Vacuum tank is 30 liters.
- Built-in vacuum gauge.
- Integrated vacuum valve.
- Large side cover for easy access to the interior of the vacuum tank.
- 1" pipe vacuum supply.
- Can be mounted on the wall or on the floor.
- Pump with graphite vanes (no oil).

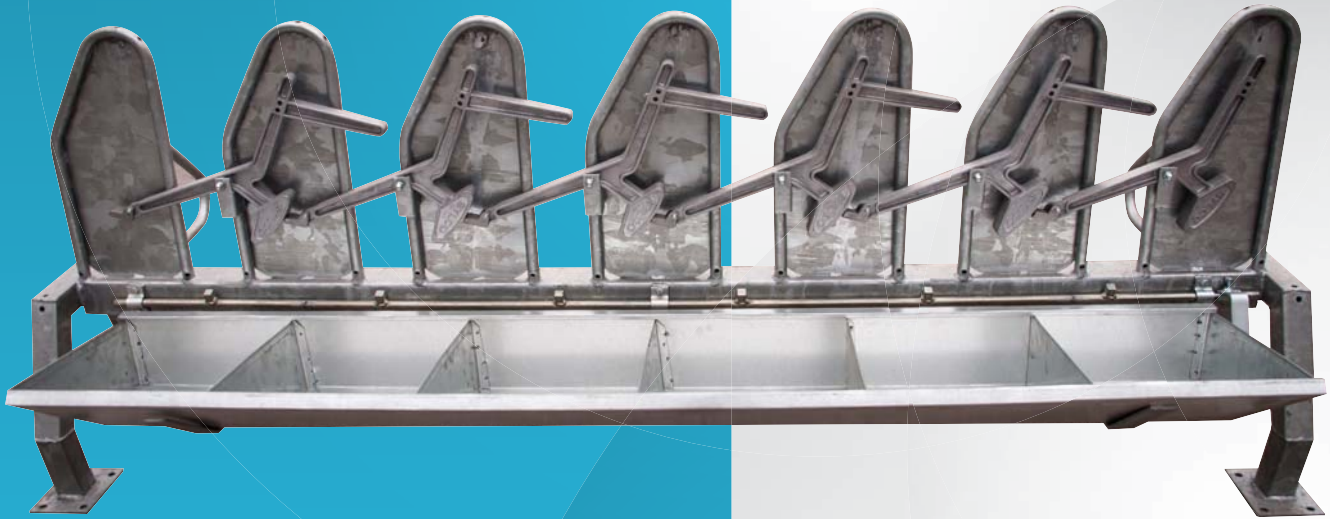
MILK TANK SCALES GL200

Electronic milk tank scales weigh accurately the amount of milk you produce.

The stainless steel weighing cells and supports can operate without problems in areas like milk tank room where a lot of water and acids exist. It is specifically designed for cooling tanks and are sold with 4, 6 or 8 cells and weighing capacity starting from 2 to 24 tons with a precision of up to 100 grams.



- Has an easy to read display with large characters.
- Certified for accuracy up to 100 grams.
- Displays kilos in real time.
- Stainless steel cells.
- Ability to store 10, 20 or 50 recipes depending on the model.
- Ability to control 4, 10, 20 or screw pump depending on the model.



CASCADING STALLS

The cascading stalls for sheep and goats manufactured by our company has a number of features that make it an ideal solution for small farms.

On start up only one animal place is open for the animals.

The animals are driven there and as soon as the first headlock is activated the next place is opened for entering.

This continues until all animals are in place.

Index Entrainment 6 posts

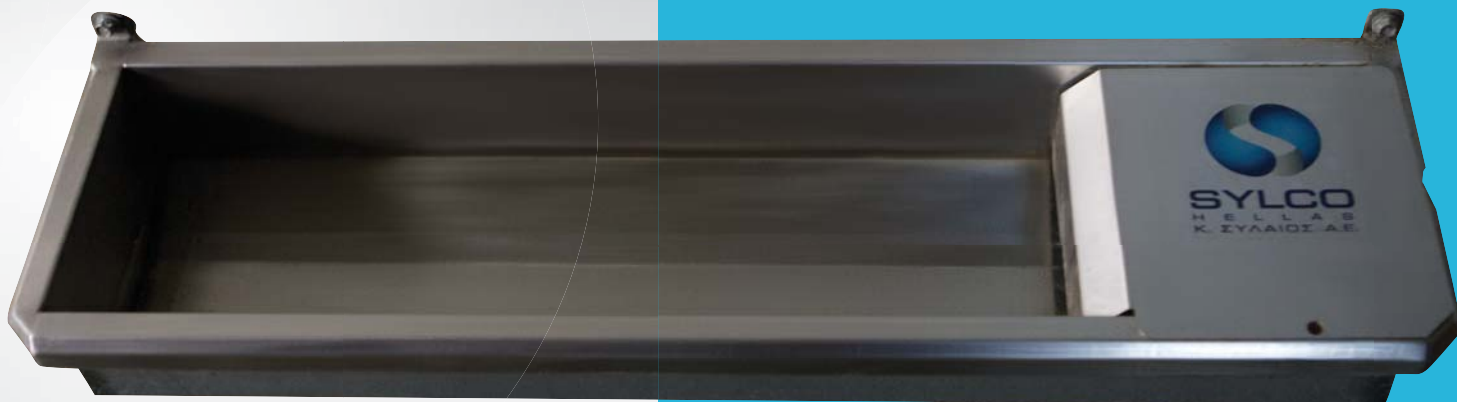
The most compact form of sheep and goat stalls. It is ideal for hobby farmers. It can be used in farms with up to 80 animals. It is equipped with feed trough and aluminum headlocks.

It can be cascading or with normal headlocks. It has integrated supports and is ready to be used.

The Key Features are:

- Cascading stalls 12 places heavy duty.
- Possible to expand to 18 to 24 - 30 - 36 seats easily even after the initial installation.
- Hot galvanized.
- Aluminum headlocks.
- Entry and exit gates for animals.
- Possible to install feed distribution system.
- Possible to install on a moving platform.
- Can be used in farms with no electric power.
- Simultaneous release of all the animals.
- No maintenance and operating costs.
- Extremely low-cost.





Sturdy Built **High Hygiene Standards**

The tank from which the animals drink water and its supports is all made of stainless steel.

The tank can be emptied and cleaned very easy. A high capacity filling mechanism refills the trough instantly.

DRINKING TROUGHS

They can offer to the animals large quantities of water in a short time.



Easy to Install

The trough can be mounted on a wall or installed on a level surface. Installation is simple and animals can have access to the desirable quantity of fresh water in a few minutes.

FEED PRODUCTION SYSTEMS

Fresh is Good

Proper nutrition is one of the basic factors that determine the success of a farm.

SYLCO HELLAS offers advanced solutions for the storage, processing and delivery of feedstuff starting from small farms of 10 animals and up to professional automatic compound feed production facilities with a production that surpasses 50 tons per 8h.

A feedstuff production mill is a prerequisite to fully control the quality of feedstuff. It is therefore ensured that the animals are provided with fresh feedstuff produced to cover the specific needs of each farm.

Hammer Mill or Roller Mill?

Whatever your needs, there is a solution. The hammer mill is the most popular type of mill. By changing the screen size it can produce feedstuff for any animal specie. Both the small 2HP mills as well as the professional 100HP mills share the same build quality and pass the same strict quality controls.



Roller mills are mainly used in goat/sheep farms or for horses. Their efficiency is excellent and the quality of feedstuff exceptional. Roller mills do not destroy feedstuff. Fibers are intact and no dust is produced.

Roller mills of 2HP engine and production of 150 kg/h as well as professional 10HP mills with production of over 2000 kg/h are available to cover the specific needs of every farm.

When used together with semi horizontal mixers, roller mills are an excellent tool for modern farms that want full control of the quality of food.

MIXERS

Mixers can be horizontal, semi-horizontal or vertical depending on the customer's specific needs

Horizontal

Horizontal mixer machines comprise the professional line of SYLCO HELLAS. They are the faster and more accurate. They can have one, two or even three levels to accelerate production. They are available in 500 liter and 4000 liter capacities

Semi-horizontal

This is a semi professional type of mixer. It offers extremely fast mixing: the mix is prepared in nearly half the time comparing to the vertical machines. The final product is highly homogeneous. An electrical gear motor provides motion directly to the Ø300 auger and operates at 70 RPM.

Feedstuff is maintained at perfect condition. There are two models available: the first has a capacity of 950 liters and the second 2050 liters.

TYPE	915-16	922-16	922-16	955-30	975-30
Horsepower	2HP	3HP	5.5HP	7.5HP	10HP
Production	150-220	250-350	700-1100	1000-1500	1400-2000
Weight	97	102	265	305	315

Vertical

Vertical mixer machines are the most popular because they combine ease of use and low cost.

They can be combined with any mill and have a capacity of 1900 or 2300 liters.



NURSING MACHINES



Nursing machines are a necessary tool for the proper and economic raising of calves and lambs.

They can be used in farms with sheep or cattle.

They are easy to operate.

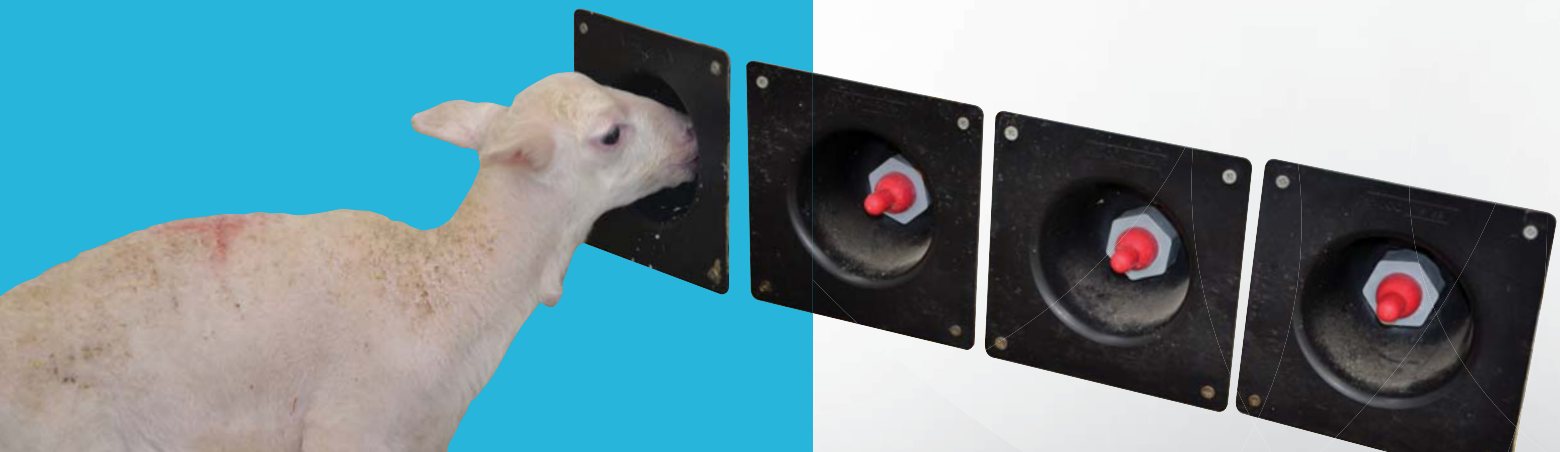
They require minimal care and maintenance.

They are not affected by water supply pressure.

There are **2 models** depending on the size of the farm. All young animals are in one place, so handling them is easy. The young animals can have warm milk when they need it.

The electronic nursing machine is controlled by **PLC**. The adjustment is easy and the change of the ratio even easier.

Self diagnostics are integrated and statistical data are easily accessible.





Built to comply with the strictest specifications using highest quality materials SYLCO feeders will withstand the adverse conditions in barns.

Not a single leaf is wasted...

SYLCO feeders are designed to minimize grass losses.

Only the lower part of the mesh is left open so that excessive grass drawn by the animals falls onto the galvanized tray underneath.

Feed losses are minimal

FEEDERS

SYLCO feeders provide a clever and practical way to cover sheep and goat daily feeding needs in grass, clover or any other feedstuffs

A heavy duty version with painted grass container mesh and galvanized stand legs is available along with the extra heavy duty version where both mesh and stand legs are galvanized.

Despite its heavy construction the SYLCO feeder can be easily disassembled to be stored or transported effortlessly.

Three different feeder sizes (1.25m - 2.00m - 2.50m) are available to cover the customer's particular needs according to the available space.

Sturdy construction to last for a lifetime...



VKS FEEDING TABLE FOR SHEEP & GOATS

VKS Sheep and Goats Feeding tables are the industry top choice in sheep and goat feeding systems.

Not only is it a way for easily feeding the animals but also a high quality tool with many benefits.

The robust construction (hot-dip galvanized or stainless steel body, heavy duty, stainless steel external surfaces, aluminum animal head locks) is designed for the adverse conditions inside a barn.

There are 3 different models, each one in two variants, so that everyone can find the one that serves best the needs of his farm.

The VKS Sheep and Goats feeding table can be used to easily feed 6 animals per running meter. It can deliver a variety of different feed



types in solid form. Hay, concentrated feed or even a combination of both is not a problem.

The loading can be done by hand, auger or even a mixing wagon.

The loading area is outside the animal area, so it is clean and easily accessible.

The feeding table can save a lot of space as well, since it eliminates the need for feeding corridors and can be used as a divider for the animal groups.

Each animal can have for its own the corresponding portion of feed. There is no animal crowding or pushing nor animals that disturb others during feeding.

Group feeding per animal group is possible.



The VKS Sheep and Goats feeding table is controlled by central control panel. The speed of the elastic band can be easily adjusted by an external rotating switch.

The adjustment of the loading speed is thus very easy. The user can also select between continuous loading function or the auto advancing system, by means of an external switch.

When the auto advancing function is selected a sensor is activated.

If for some reason there is no feed on the elastic band, the table stops until the empty space is filled. As soon as it is filled, the band starts moving again automatically. In this way all the animals will

find feed waiting, on their place. In all Feeding Tables, the surfaces of the traction mechanism, the load section, the inner surface under the belt and the outer lower surfaces are made of stainless steel 304.



VKS 3000 and VKS 2000

The VKS 3000 and VKS 2000 Sheep and Goats feeding table is the only system that supports individual head locking of the animals.

The table incorporates a self head locking mechanism that requires no action on part of the farmer. Every animal is locked by itself as soon as it lowers the head to eat, by means of an aluminum headlock. There is no need for the farmer to be there and lock the animals.

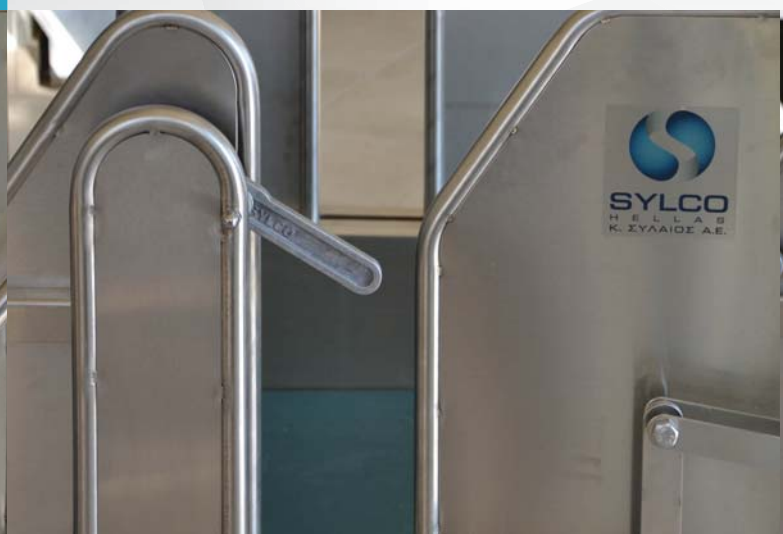
The release of the animals can be done for all the animals simultaneously by means of the central unlocking lever or individually for each animal by the farmer.

In this way the table can be used for other purposes as well (e.g. ultrasound examina-

There are 3 positions of the table locking mechanism:



VKS 3000



Open Position:

While in this position the feeding places are open and accessible to the animals with no locking mechanism activated. The animals can come, eat and go at their own will.

Locking Position:

While in this position the feeding places are open and accessible to the animals, but the locking mechanism is activated. The animals can come and eat, but they will be locked in place and cannot leave unless the farmer decides to release them.

VKS 2000



tion or other veterinarian tasks). After performing the task each animal can be released separately.

The main difference between the **VKS 3000** and the **VKS 2000** is the construction material.

The **VKS 3000** is made entirely of stainless steel **304** while the **VKS 2000** trap mechanism and frame is hot dip galvanized.



Closed Position:

While in this position the feeding places are closed and not accessible to the animals. This is for avoiding accidents during loading or in case the farmer for some reason does not wish to feed the animals.



VKS 1000G and VKS 1000S

The **1000 series** Sheep and Goats feeding table they do not have individual animal trapping but group trapping instead.

They have a sliding mechanism that operates also in **3 positions**. Open, Closed and Locking the animals.

The main difference between **VKS 1000G** and **VKS 1000S** is also the construction material.

The **VKS 1000S** is made entirely of stainless steel **304** while the **VKS 1000G** trapping mechanism and frame is hot dip galvanized.

VKS 500G and VKS 500S

The **500 series** Sheep and Goats feeding table do not have individual animal trapping but group instead and operate by the principle that a part of the frame moves up and down (Guillotine).

It is the most affordable series price-wise without sacrificing the quality of construction.

Their mechanism operates also in **3 places**. Open, Closed and Locking.

The main difference between the **VKS 500G** and the **VKS 500S** is also the construction material.

The **VKS 500S** is made entirely of stainless steel **304** while the **VKS 500G** trapping mechanism and frame is hot dip galvanized.

PLASTIC FLOOR

Made of high quality virgin materials **Plastic Floor SYLCO** is one of the best solution for a healthy and safety farm.

The layout of the board is designed for fast and safe movement towards all directions. The specially designed slots allow dirt and liquids to flow beneath the surface keeping the floor clear.

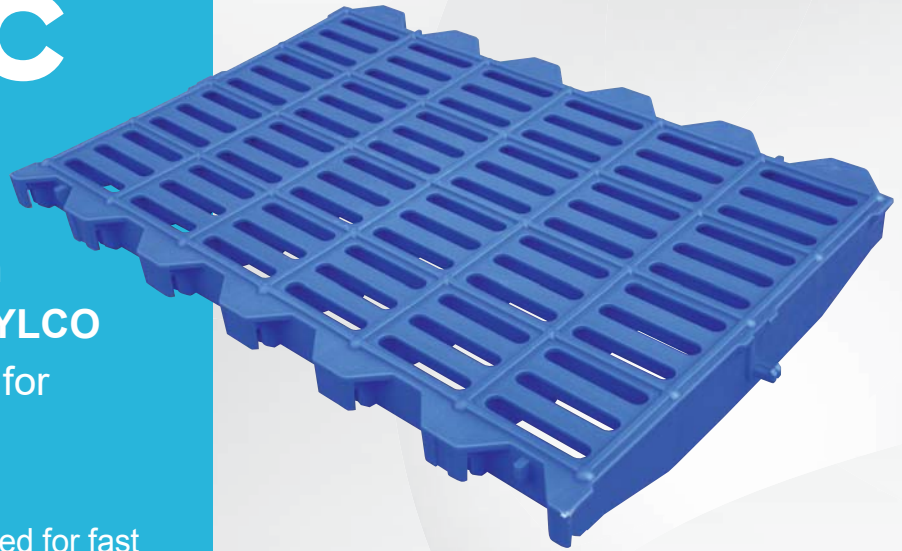
Plastic Floor SYLCO are available in attractive colours of your choice that gives high-tech and hygienic look to the farm.

Dimensions

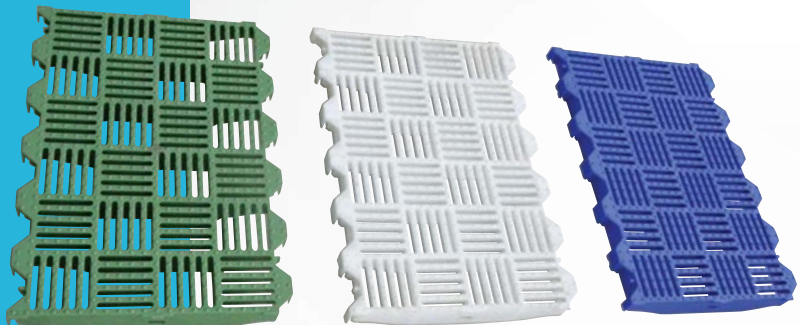
60x40cm

40x40cm

- Two sizes openings to fit the needs of various animals.
- Unique fast and safe movement towards all directions.
- Easy to installed.
- Manufactured under the highest standards.
- Low maintenance (easy to clean).
- Highly improved hygiene, avoids fungal skin problems in Goats and Sheep during wet seasons.
- The animals stay clean and dry.
- 3 times longer life in comparison to wooden floors.
- Made of high quality virgin raw materials of well known producers.



Smart hygienic solutions can easily be integrated.



THE COMPANY

Knowledge

Support

Consistency

Our company deals with animal mechanical milking systems since 1959. As the years passed, accumulated experience helped us develop and evolve top level milking systems. Apart from the high quality of the materials that make our milking machines to stand out, we offer continuous technical support.

Support that starts with assistance and advice even at the earliest stages of designing, placing and construction of the milking parlor building and continues with the construction of the milking machine itself by our specialized technicians and the end user training. But we do not stop there.

The milking parlor is the heart of the farm and for this reason we provide technical support 24 hours a day, 7 days a week.

All parts and components needed are readily available. Our workshops and mobile technical support vehicles are fully equipped with the latest generation of instrumentation and can perform preventative controls and regulate all types of milking parlors.

High quality equipment and excellent technical support are only two of the reasons that make the choice of our milking machines, your only real option.





SYLCO
H E L L A S
K. S Y L E O S S.A.

Egnatia's North Service Road & Syleou 1, Industrial Park, 57013 Oreokastro, Greece, P.O. Box 8,
tel.: +30 2310.515.122 • fax: +30 2310.530.743 • e-mail: info@sylco.gr • web: www.sylco.gr